



## Pacific Autism Center for Education

Celebrating 35 years, the Pacific Autism Center for Education provides high-quality programs for children and adults with moderate-to-severe autism.



### Pacific Autism CENTER FOR EDUCATION



1989

Executive Director  
Linda Reese, Ph.D.

Incorporated  
"Pacific" for a global view, not just a local agency, "Autism" our primary focus, "Center" where it is happening, "Education" learning for students, residents, and families alike.

Executive Director  
Sandy Reischer

PACE School  
Moves to  
Stockmeir School  
Sunnyvale

PACE School  
Moves to  
Portal Elementary  
Cupertino

PACE School  
Opens 2 classrooms  
Nimitz Elementary  
Sunnyvale

Residential Program Begins  
Morehouse & Meadows

1994

501(c)3  
non-profit status

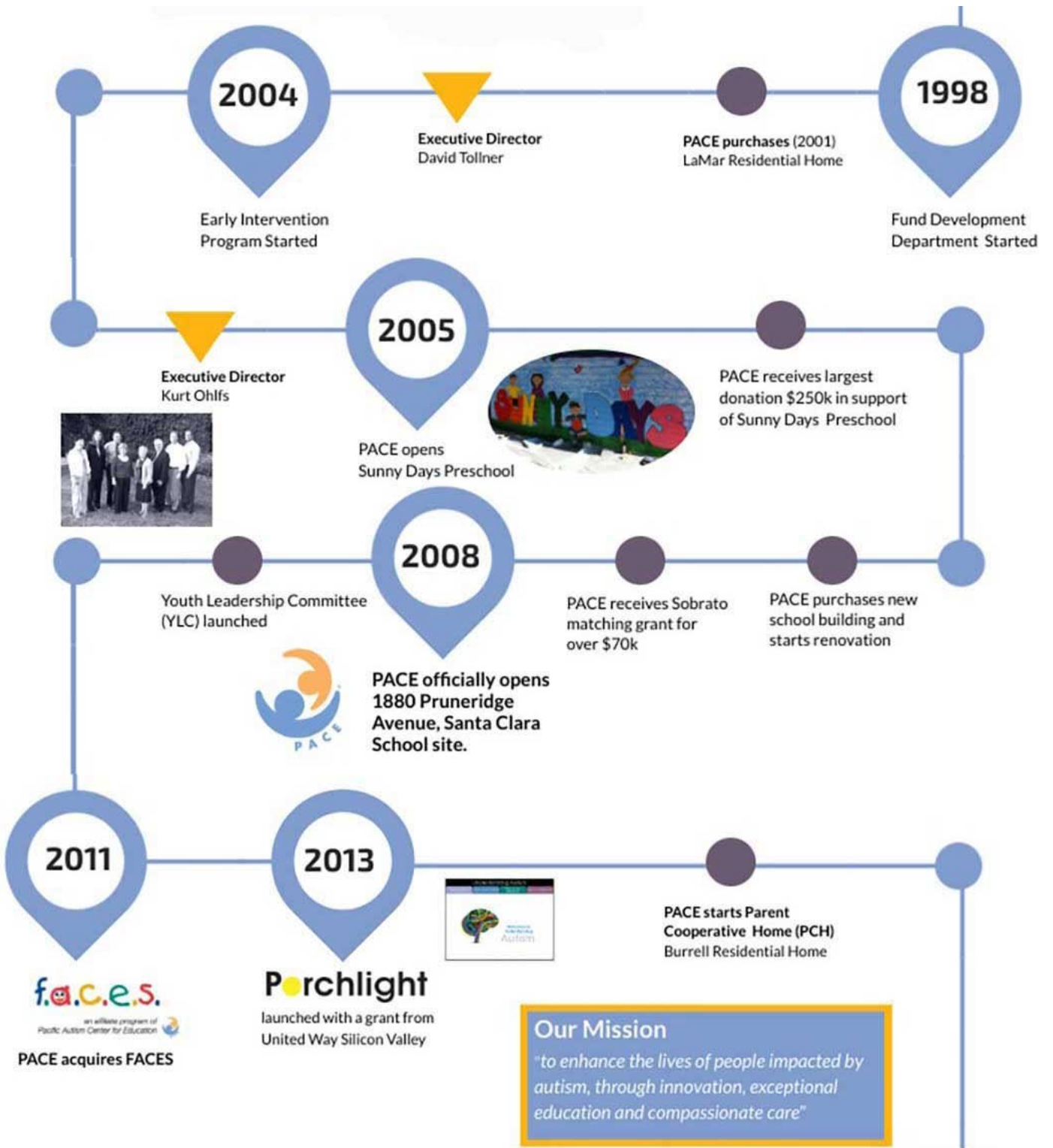
1996

By 1996, PACE owns & operates 5 Residential Homes: Morehouse, Meadows, Mahalo, Miracle, Matranga



1997

Began Adult Day Program



**Our Mission**  
*"to enhance the lives of people impacted by autism, through innovation, exceptional education and compassionate care"*

**f.a.c.e.s.**  
 an alliance program of  
 Pacific Autism Center for Education  
**PACE acquires FACES**

**Porchlight**  
 launched with a grant from  
 United Way Silicon Valley

2015

PACE receives Community Care Licensing (CCL) for Sunny Days Preschool



PACE receives grant from Intero to build playground



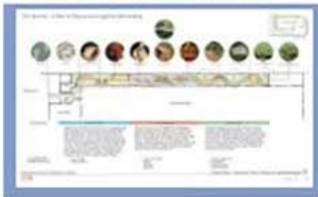
2014



PACE celebrates 25 years!

2016

PACE receives grant from CSR & Cupertino Rotary for "The Journey" Side Yard



FACES expands to offer "Little Faces" clinic @ Sunny Days Preschool



2018

PACE receives \$50k from Sharks Foundation and Kaiser Permanente for Bike Garage & Playground Project



2019

PACE celebrates 30 years!

### Our Vision

"A world where people of all abilities live fulfilled lives."



PACE launches Porchlight University with grants from NBC Universal, Heffernan Foundation, and Autism Speaks.

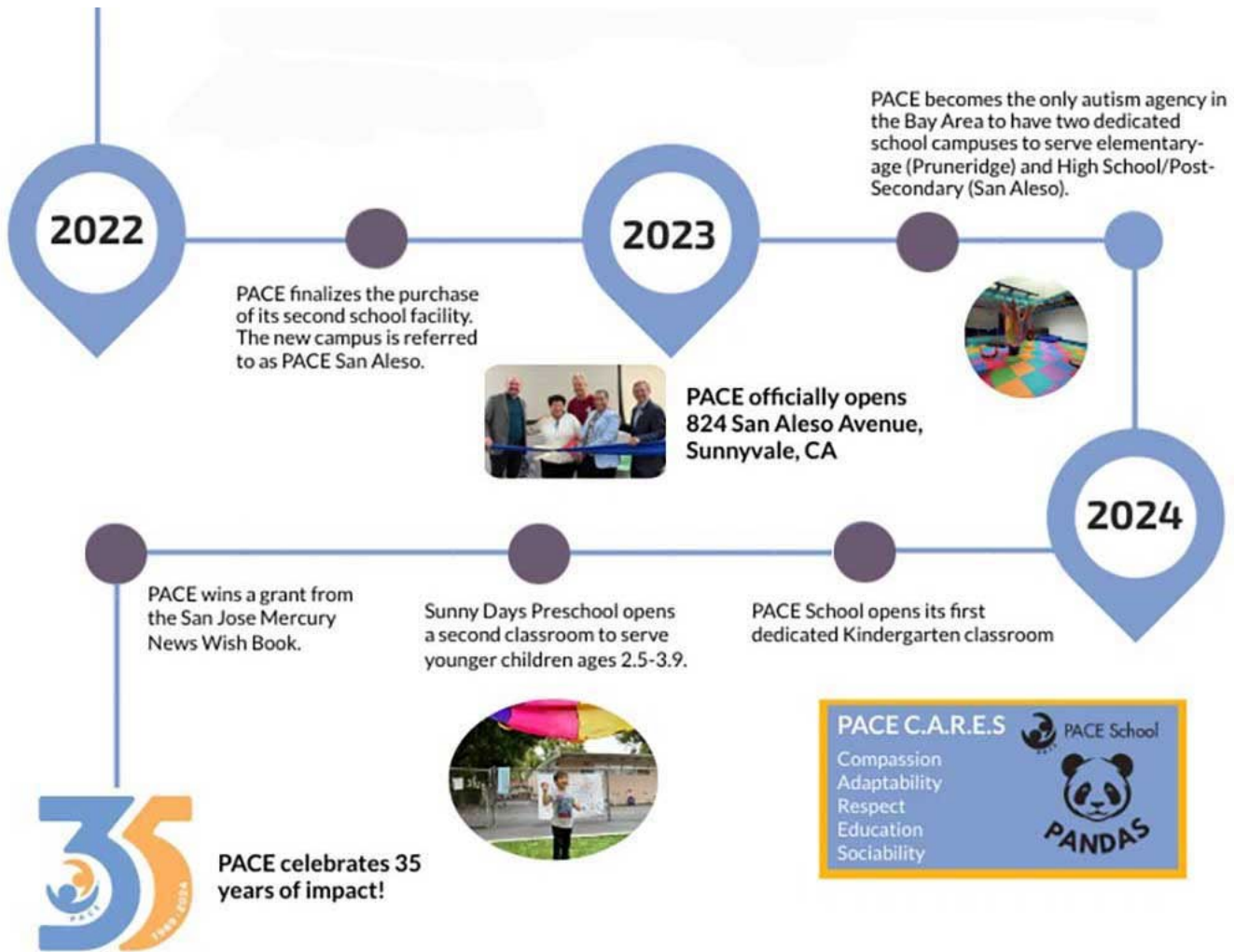


Educational Resources and Activities for Shelter in Place



### Pandemic-Era

During the pandemic-era, PACE continued to provide high-quality services and support to students, clients, residents, and their families. Members of our local community showed their support by donating PPE, hand sanitizer, and other essential supplies.



**Pacific Autism**  
CENTER FOR EDUCATION

**Faces**  
Behavioral Services  
For Children

**Sunny Days**  
Preschool

**PACE School**  
Non-Public  
Special Education

**Residential Services**  
Group Home  
Services

**Porchlight**  
Autism Education Series