



Pacific Autism
CENTER FOR EDUCATION

ANNUAL REPORT 2017-2018

Connect • Support • Educate

OUR MESSAGE

A group of people, mostly wearing white t-shirts, are participating in a walk or run outdoors. They are holding large, colorful balloons in shades of yellow, pink, blue, and green. The scene is set on a paved area, possibly a parking lot or a wide walkway, with trees and a clear sky in the background. The overall atmosphere is bright and positive.

As we look forward to our 30th Anniversary in 2019, we can reflect on the incredible generosity of our donors that has helped make such a difference to those affected by autism in the Bay Area. In the past thirty years, the demand for autism services has increased by 165%, to a point today where the needs far exceed the available staffing resources. Our free online training program, Porchlight Education, is proving to have broad impact to the local community and beyond. PACE has many forward looking growth opportunities and overcoming the resource limitations will require a unified community effort founded in collaboration, education and confidence to take us through the next thirty years. Thank you for being an active partner in our future.

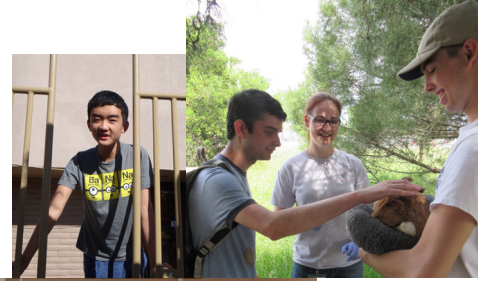
Sincerely,
Kurt Ohlfs, Executive Director

CONTENTS

Our Mission.....	4	PACE Divisions.....	9-13
About Us.....	5	Board of Directors.....	15
Our Leadership Team.....	6	Corporate Donors.....	16-17
Revenue & Expense.....	7	Supporters.....	18-19

OUR MISSION

To enhance the lives of people impacted by autism, through innovation, exceptional education, and compassionate care.



OUR VISION

A world where people of all abilities live fulfilled lives.

ABOUT US



Founded in 1989, Pacific Autism Center for Education provides high-quality programs for children and adults with autism. PACE's vision is a world in which people of all abilities live fulfilled lives. Our comprehensive services include the PACE School serving ages 6-22, Sunny Days, an inclusive early intervention preschool, PACE Residential group homes, Faces and Little Faces Behavioral Services, and the online free eLearning resource, Porchlight Autism Education Series.

At PACE, we strive to connect, support, and educate individuals with autism. PACE teaches social and communication skills in order for our clients to experience the satisfaction and fulfillment that accompany learning, self-expression, self-care, productive work and community experiences, despite the limitations of their disabilities. The heart of the PACE model is for every person to have the ability to: *Communicate, Regulate, and Relate.*

OUR LEADERSHIP TEAM

“PACE is committed to building a connected compassionate community equipped with skills to make a difference in the lives of people with autism.”

~ Kurt Ohlfs, Executive Director



Kurt Ohlfs
Executive Director



Karen Kennan
Assistant
Executive Director



Tom McGovern
President,
Board of Directors



David Setti
Vice President,
Board of Directors



Thomas Marchok
Treasurer,
Board of Directors

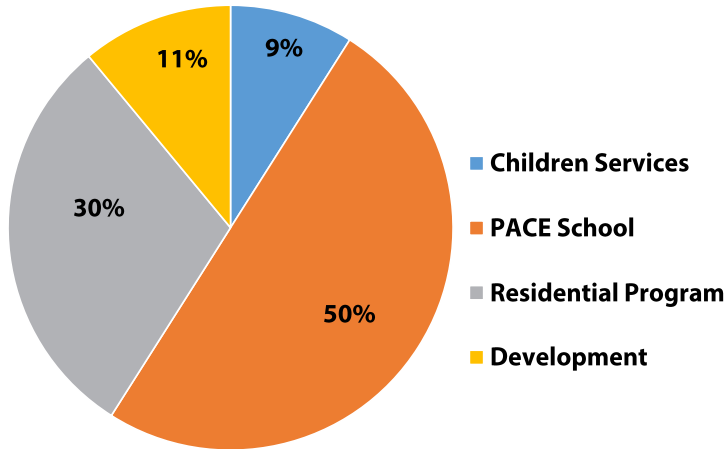
158
Teachers
Therapists
Support Aides

12
Administrative
Staff

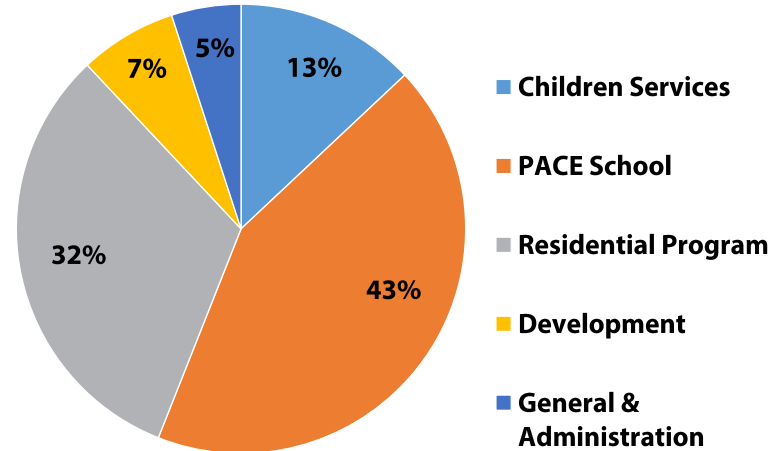
80+
Volunteers

2017-2018 REVENUE & EXPENSE

REVENUE \$10.4M



EXPENSE \$9.4M



PLEASE CONSIDER DONATING TO PACE AND SUPPORTING OUR PROGRAMS!
WWW.PACICAUTISM.ORG OR CONTACT FUND DEVELOPMENT AT 408-625-6193

OUR COMMITMENT



Moore Conteh, Teacher Assistant, Classroom #2

Teaching children with autism in her homeland of Sierra Leone, West Africa, Moore became committed to serving individuals with special needs. Moore watched, listened, and learned how to teach from her mother, a teacher of 25 years who manages a school with few resources, especially for children with learning differences. "Special needs children need more help," she fondly remembers, repeating her mother's words.

Arriving in the United States five years ago, Moore started working at PACE shortly thereafter to further her career in working with children with autism and learning differences. Maintaining a steady course, she has taught in the same classroom, moving up the ranks from an Instructional Aide to her current role as a Teacher's Assistant. Her goal is to complete a Physician's Assistant Program and become a teacher with a PA degree. She says, working

at PACE has given her an opportunity to explore the career path and has taught her how to be a stronger advocate for people with autism for the rest of her life. She has witnessed a lot of student behaviors, and with her compassionate eye and ear, understands that if you can tune into a student with special needs, you can determine their strengths and figure out what's driving their behaviors ...there is usually a reason.

Moore shared insightful memories about a particular student. When she first started working with him, he slept 4 hours a day during school hours, was non-verbal, wore diapers, and exhibited very difficult behaviors. Watching closely, listening to his gestures, and building basic communication skills with him, Moore began to successfully engage him throughout the day, train him to use the bathroom and cope with his texture sensitivities. She went beyond the scope of the classroom and visited his family to support him at home when needed. Children with autism often have a long and complicated therapeutic program and families sometimes lose perspective on their child's abilities. Moore believes that the person with autism may have more capability than we might first recognize. Students' lives have changed because of the care and attention that Moore has offered them! Thank you Moore for bringing all of your compassion and knowledge to PACE!

2,964 Hours



Individual Speech & Occupational
Therapy

990 Hours



Group Therapy

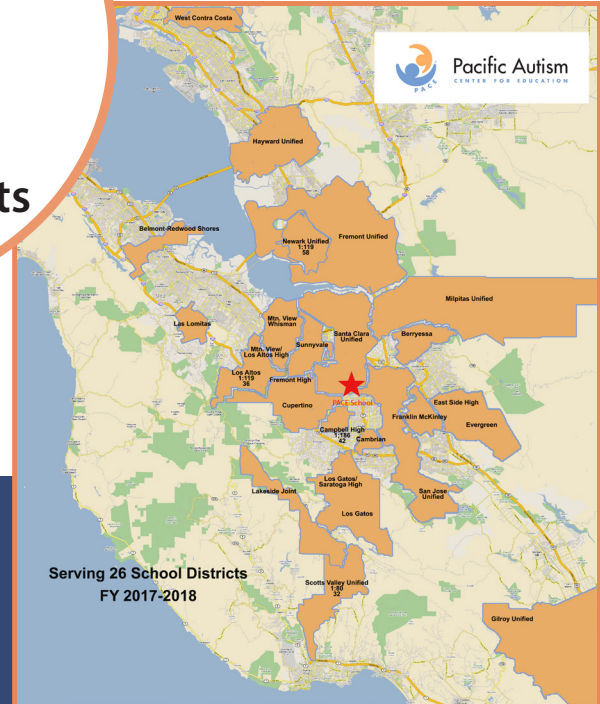
170+
Community
Activity Days



\$4,800
Edible Reinforcers



**2017-2018
PACE School
educated
55 students
from
26 school districts**





Faces™

Behavioral Services for Children

Founded in 1995, FACES Behavioral Therapy supports children with autism ages 18 months through 12 years old in reaching their full potential utilizing Applied Behavior Analysis (ABA). Little Faces, located on site at the Sunny Days Preschool, provides 1:1 early intervention ABA therapy for younger children, offers AM & PM clinic hours, and has an extended Preschool option.

Services include intensive early intervention, elementary-aged intervention, school and parent consultation, and social development. Therapy can take place at home, in the community, and at school.

Total Served 2017-2018: 42 Clients + Parent Training Sessions + Consultations

Sunny Days Preschool

Serving San Jose since 2005, Sunny Days Preschool is Non Public School (NPS) certified and a California licensed Child Care Center (CCL). Sunny Days offers a half day morning preschool program for children ages two and a half to six years old. Sunny Days supports children on the autism spectrum and those needing a little extra support in a responsive, developmentally appropriate program.

2017-2018 Enrollment: 19



THANK YOU TO
HABITAT FOR
HUMANITY AND
WESTERN DIGITAL
FOR OUR NEW
PLAYHOUSE!



Residential

Group Home Services

6 Group Homes
32 Residents
24 hours a day
365 days a year

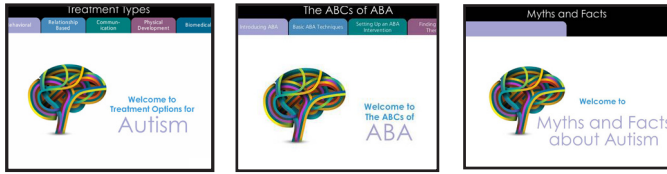


What does it mean to be a resident with PACE? It means a world that is stable with a consistent lifestyle and a very steady routine. This routine allows individuals with autism to live more independently and make successful transitions during challenging times. The PACE staff works with our residents in a nurturing and instructive manner.

Josh, fondly called JJ, age 25, is a beloved resident of almost eighteen years. He first joined PACE as a young child. JJ is a persistent young man who has successfully made a transition from the Miracle Children's Home into the Matranga Adult Home. When JJ first moved into the adult home, he was completely dependent on his Augmentative & Alternative Communication (AAC) device to communicate with the staff and had immense difficulty expressing his needs. In the last three years, JJ has learned to communicate entirely without his device! He uses words and gestures to connect with his house mates and staff. He is actively engaged in his group home, loves to eat little candies, take off his shoes, and sit comfortably in full lotus. Recently, he has even let go of his fears of outings and new experiences and is the first one on the harbor boats when the home goes on San Francisco adventures. Transitional times are key to an individual's success in building life skills; it is a primary goal of our PACE programming to work with all residents to promote personal growth. JJ is an example of how an individual with moderate to severe autism can learn how to communicate, become tolerant of challenging experiences, and engage in community by developing new skills.

Porchlight™

Autism Education Series



The Porchlight Autism Education Series is a free eLearning program with over 50 modules designed to offer behavioral solutions to common daily challenges! Porchlight continues to be a strategic focus for Pacific Autism Center for Education to serve a global audience. Porchlight developments are funded with private contributions that support our global outreach. Recently, the global growth rate of the Porchlight platform has been significant.

2017-2018

21,723 Users; 618% Growth Rate in 1 year
25,118 Sessions; 526% Growth Rate in 1 year
107,492 Page Views; 344% Growth Rate in 1 year

Most Viewed Modules:

1. Understanding Autism
2. Treatment Options
3. Daily Routines



www.porchlighteducation.org

2017-2018 EVENTS

Inspiring volunteerism & fund raising for PACE

Thank you to all of our volunteers and donors who made our 2017-2018 fund raising events successful and a blast! Your support is appreciated beyond measure. Your contributions keep programs alive for our students, residents, clients, and our online community.

- 04.16.17 Voices for Autism
- 11.11.17 TAPAS & TUNES
- 05.17.18 Bay Area Real Estate Roundtable



GET INVOLVED & SUPPORT PACE!

CONTACT DEVELOPMENT TO VOLUNTEER OR SPONSOR EVENTS AT 408-625-6193

BOARD OF DIRECTORS

Tom McGovern, President

David Setti, Vice President

Thomas Marchok, Treasurer

Kurt Ohlfs, Secretary (non-voting)

Paul Lacy

Jeff Fallick

Mark Gilfix

Lisa Grisalin

Harry Lopez, Esq.

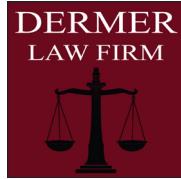
Debbie McCarroll

Sarah Mudgett

Mark Peper

REPORTING 100% BOARD GIVING
BOARD POSITIONS AVAILABLE, GET INVOLVED & SUPPORT PACE!

CORPORATE DONORS





For a full list of all corporate supporters, grantors, matching gift corporations, please visit our website www.pacificautism.org. Our best effort was made to include all corporate donors \$500+. We apologize if inadvertently donors were omitted.

SUPPORTERS- Thank You!

\$20,000+

Pat & Penny Barrett
Jeff Weber

\$10,000-\$19,999

Jim Carbone
Rocky Fried
Brad Geier
John & Marcia Goldman
Mark Heising & Liz Simons
Matt & Ellen Moran
Chuck Seufferlein
Scott Smithers
SPARK Foundation
Timothy Treadway

\$5,000-\$9,999

Greg Cloth
Terry Daly
David Denton
Stephen Emond &
Deborah Faryniarz
Bob Gray
Andrea Gregori
Sam Hamilton
Dave Haugh

Tom Hayes
Sam & Michele Hooker
Dan Letter
Jessica Levin
Morgan Lingle
Ken Perry
Matt Squires
Jean Suyenaga
Stephen Van Dusen
Brandon Wang

\$1,000-\$4,999

Beau Baiocchi
Adam Berry
Drew Bolger
Robert & Janet Brabson
Bruce Burkard
Anthony Burney
Todd Campbell
Dinesh Chandra &
Kalpana Krishna
Will Connors
Joe & Cheryl Dermer
Sheila Dermer
Erik Doyle

Steve Dunn
Melinda Ellis Evers
Gilbert & Jill Escher
Jeff Fallick
Conor Famulener
James & Arleen Ferguson
Patrick Fisher
Jason Flynn
Chris Freise
Joseph Galgano &
Gail Hashimoto
Zack Georgeson
Michael & Myra Gilfix
Drew Gordon
Janey Greig
Matt Haden
Erik Hallgrimson
Andrew Harper
Gregory Hartman
Drew Haydel
Brian Hecktman
Rob Hielscher
Cory Higgins
Tyler Higgins
Charles Horejs

David Hosler
Mike House
Kyle Jeffers
Nate Jones
Yih & Mei Lin Jung
Darren Kenney
Griff King
Mark & Heidi Klein
Darin Klein
Ben Kochalski
Kevin Kranzusich
Quynh Le
Matt Lituchy
Harry Lopez
Dennis Lorette & Patti Wilson
Jon Mackey
Mark Maguire
Adam Mahoney
Dennis Martin
Jerry & Jan Matranga
Dan McCormick
Richard & Dianne McDonnell
Seth McKinnon
Mark Mengelberg
Tyler Meyerdirk

Todd Miller	\$500-\$999	Bill & Jill Gould	Ryan Payne
Ray & Suzanne Mocherman	Jordan Angel	Chris Graham	Scott Pertel
Kazuko Morgan	Chris Banke	Gabriel & Maria Grosskopf	Mark Pirie
Morrison & Foerster Foundation	Cartter Berg	Erik Hanson	Ricardo Ramirez &
Kottayam & Sita Murugan	Bill Berridge	Ali Harandi	Maria Socorro Romero
Haden Ognaro	Andrew Blanchard	Darrin Hollak	Neil Reichline &
Todd & Suzannne Oliver	Mark Bodie	Mariam Karim	Marylin Fils
Mark Peper	Marc Bonfigli	Randy & Judy Keller	Victor & Olga Rivkin
Willis Polite, Jr.	Jennifer Borges	McClure Kelly	Jonathan Roheim
Ed Pratt & Dan Dermer	John Boynton	Wayne & Karen Kennan	Tim Schaedler
Albert Pura	Tony Calabrese	Paul Lacy	Luke Seufferlein
Gery Rohm	Steve Calcagno	Jason Lowenthal	Al Shihabi
Henry Sears	Dustin Calkins	Tom & Teresa Marchok	Seth Siegel
Carl Shannon	Brad Cardon	Will Marks	JT Sizemore
Mike Taquino	Peter Cassiano	Debbie McCarroll	James Staunton
Tom Taranto	Tommy Christman	Tom & Shelia McGovern	Drew Stepanek
Chris Tokarski	Gig Codiga	Ryan McShane	Brooks Stratmore
Adam Voelker	Ted Davies	Matthew Meredith	Josh Troxel
Gregg Walker	Mark Deason	Charles & Jenny Milo	Adolf & Marion van der Heide
Mark Walker	Trucie DeWit	Paul Monaco	Andrew Verhalen &
David Wilbur	David Dokko	Kazuko Morgan	Janet Brownstone
Stuart Williams	Scott Eschelman	David Nelson	Sean Whitney
Shunmin Yan	Karen Farnsworth	Kurt & Carmen Ohlfs	Peter Winterling
	Chris Gandy	Allen Palmer	Andy Zigelboim
	Lee & Susan Gotshall-Maxon	Mark Parry	

Thank you to all of our individual donors for Fiscal Year July 1, 2017- June 30, 2018. For a full list of all individual supporters, please visit our website www.pacificaautism.org. Our best effort was made to include all donors \$500+, auction and ticket purchases not included. We apologize if inadvertently donors were omitted.

PACIFIC AUTISM CENTER FOR EDUCATION

1880 Pruneridge Ave., Santa Clara, CA 95050 • 408-245-3400
www.pacificautism.org

