



2016-2017 ANNUAL REPORT

Pacific Autism Center for Education

Connect • Support • Educate

OUR MESSAGE

At PACE, we aspire to build collaboration within communities of people affected by autism. While the root word of “autism” is characterized by self-isolation, our goal is to educate beyond the individual and foster greater engagement in our communities. Today, PACE continues to focus its private donation dollars increasingly towards community education. Whether it is the continued development of the online Porchlight Education Series to provide in-home implementable strategies, or our efforts in case management to open access to and educate about available services, we know that our work is really only beginning at the end of each school day.


Sincerely,
Kurt Ohlfs, Executive Director





CONTENTS

Our Mission.....	4	PACE Divisions.....	9-13
About Us.....	5	Board of Directors.....	15
Our Leadership Team.....	6	Corporate Donors.....	16-17
Revenue & Expense.....	7	Individual Donors.....	18-19





Pacific Autism
CENTER FOR EDUCATION

OUR MISSION

To enhance the lives of people impacted by autism,
through innovation, exceptional education, and
compassionate care.

OUR VISION

A world where people of all abilities live
fulfilled lives.



ABOUT US



Founded in 1989, Pacific Autism Center for Education provides high-quality programs for children and adults with autism. PACE's vision is a world in which people of all abilities live fulfilled lives. Our comprehensive services include the PACE School serving ages 6-22, Sunny Days, an inclusive early intervention preschool, PACE Residential group homes, Faces Behavioral Services, and the online free eLearning resource, Porchlight Autism Education Series.

At PACE, we strive to connect, support, and educate individuals with autism. PACE teaches social and communication skills in order for our clients to experience the satisfaction and fulfillment that accompany learning, self-expression, self-care, productive work and community experiences, despite the limitations of their disabilities. The heart of the PACE model is for every person to have the ability to: Communicate, Regulate, and Relate.

OUR LEADERSHIP TEAM

“PACE is committed to advocating for families with individuals affected by autism.”

Kurt Ohlfs, Executive Director



Kurt Ohlfs
Executive Director



Karen Kennan
Assistant
Executive Director



Tom McGovern
President,
Board of Directors



David Setti
Vice President,
Board of Directors



Thomas Marchok
Treasurer,
Board of Directors

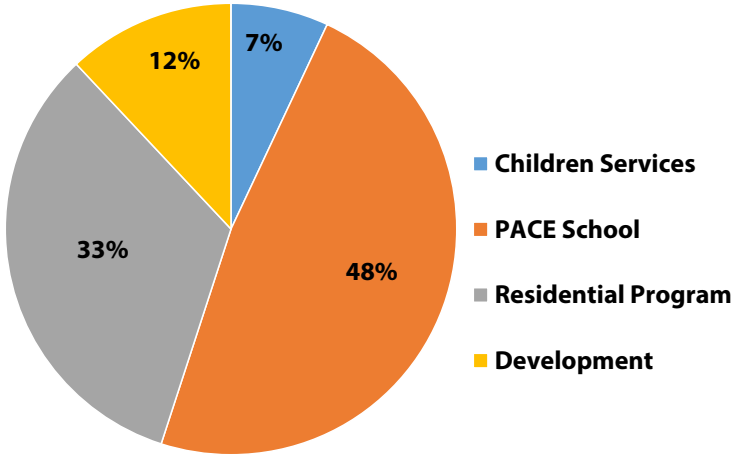
163
Teachers
Therapists
Support Aides

12
Administrative
Staff

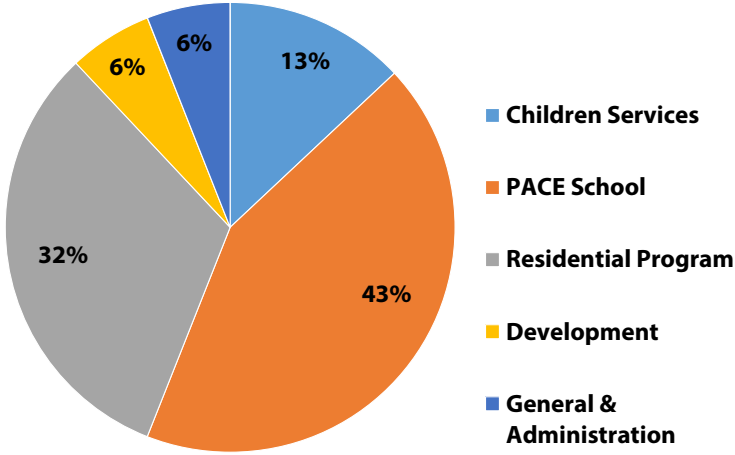
120+
Volunteers

2016-2017 REVENUE & EXPENSE

REVENUE \$10.3M



EXPENSE \$9.7M



PLEASE CONSIDER DONATING TO PACE AND SUPPORTING OUR PROGRAMS!
WWW.PACIFICAUTISM.ORG OR CONTACT FUND DEVELOPMENT AT 408-625-6193

THE MATERIALS MAGICIAN



Behind every great program is dedication, enthusiasm, and team effort. In our school program we rely on creativity, ingenuity, and connection to cultivate success. Karla is our “Materials Magician”. PACE is fortunate to have passionate employees like Karla, who has supported PACE for 11 years. In this time, her experience working as a Classroom Aide and a Therapy Coordinator has uniquely prepared her for the role of Materials Coordinator. Now, she is the person the teachers and aides can not live without! Her work is pivotal to each child’s development. She communicates with the teachers and prepares creative materials specifically for each child’s learning styles, development, and Individualized Education Plan (IEP) goals. Karla understands that each student is unique and that our greatest goal is to help each student learn to Relate, Regulate, and Communicate.

By working directly with the teachers and asking questions, Karla is able to develop and modify their ideas for instructional supplies and materials. Her ability to listen and hone her intuition has led to the creation of badges that celebrate and recognize a student’s efforts; visual icon cue cards to teach about transitions and a system of many creative tools. Parents and teachers recognize her ability to help a student ease through the “little moments” that aren’t so little when you are affected by autism.

Karla notes that during her tenure at PACE technological advancements have changed the lives of children with autism in ways we could never imagine. She is amazed at how the current generation of students navigate, scroll, communicate, and create on devices that keep them current with a modern understanding of our world.

PACE SCHOOL

2,916 Hours



Individual Speech & Occupational Therapy

852 Hours

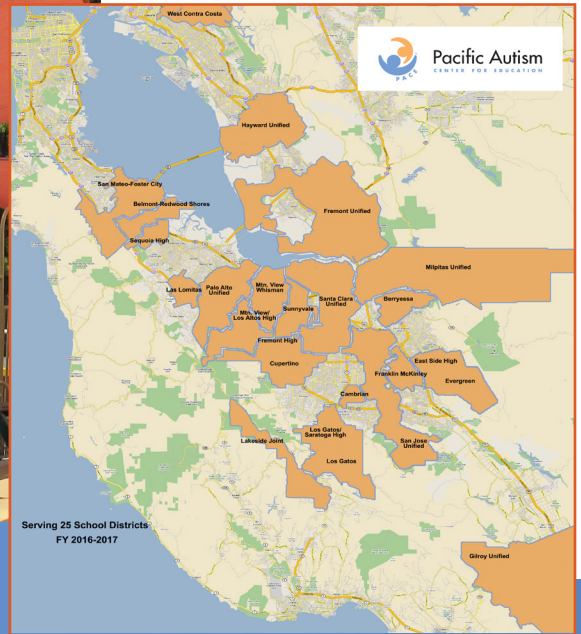


Group Therapy

\$6,000
Edible Reinforcers



200+
Community
Activity Days



In 2016-2017, PACE educated **51** students from **25** school districts.

FACES

Faces is our behavioral therapy program based in Redwood City. Founded in 1995, the Faces mission is to enable children with autism to reach their full potential utilizing Applied Behavior Analysis (ABA).

Services include intensive early intervention, elementary-aged intervention, school and parent consultation, and social development. Therapy can take place at home, in the community, and at school.

Total Served 2016-2017: 40 Clients + Parent Training Sessions + Consultations



LITTLE FACES

Our latest addition, open since March 2017, Little Faces is an extension of Faces Behavioral Services program. It is offered at the Sunny Days Preschool campus and provides 1:1 early intervention in a clinic setting with morning and afternoon clinic times available.



SUNNY DAYS PRESCHOOL



Serving San Jose since 2005, Sunny Days Preschool is Non Public School (NPS) certified and a California licensed Child Care Center (CCL). Sunny Days offers a half day morning preschool program for two and a half to six year olds that supports children on the autism spectrum and those needing a little extra support in a responsive, developmentally appropriate program.

2016-2017 Enrollment: 18

RESIDENTIAL PROGRAM

PACE operates 6 Group Homes
32 Residents and 60 Staff
24 hours a day
365 days a year



Kevin is a beloved resident and former student in PACE School. He is 25 years old and thriving in PACE LaMar Young Adult Home. Kevin entered PACE School at the age of 5 and shortly thereafter moved into Miracle Children's Group Home. The strong communication between home, school, and team of therapists who worked with Kevin on his daily living skills provided a dependable support network that encouraged Kevin's continuous growth and development. As a young adult, Kevin transitioned into LaMar House and at the age of 22 completed PACE School. Today, Kevin is actively engaged in an adult day program, has a best friend, enjoys watching a good movie and taking long walks in the local park. He is an affectionate and caring young man who demonstrates that individuals with severe autism can continue to develop and flourish with consistent support in a nurturing and stable environment.



"Kevin has had the privilege of being at PACE since he was 5 years old both in his living and school environments. This has been invaluable to me as a parent. Having consistency in his support system not only provided peace of mind for Kevin, but for me as well."

~ Layla, (Kevin's mom)

PORCHLIGHT

The Porchlight Autism Education Series is a free eLearning program with over 50 modules designed to offer behavioral solutions to common daily challenges parents or caregivers may confront in the world of developmental disabilities. Porchlight was originally funded by a grant. Today, we fund the developments with private contributions.

2016-2017

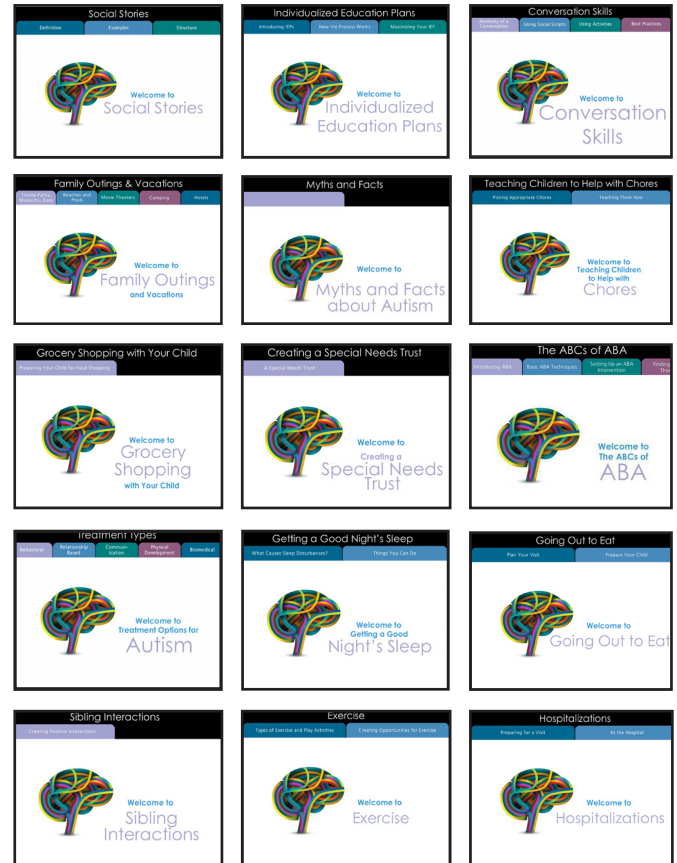
2,779 Users

4,009 Sessions

24,181 Page Views

Most Viewed Modules:

1. Understanding Autism
2. ABCs of ABA
3. Getting a Good Night's Sleep



www.porchlighteducation.org

2016-2017 EVENTS

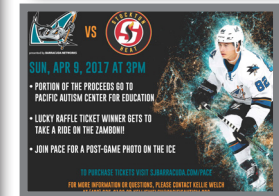
Inspiring volunteerism & fund raising for PACE

Thank you to all of our volunteers and donors who made our 2016-2017 fund raising events successful and a blast! Your support is appreciated beyond measure. Your contributions keep programs alive for our students, residents, clients, and our online community.

- 9.11.16 Lawn Party
- 4.09.17 Barracuda Game
- 4.16.17 Voices for Autism
- 5.19.17 PACE Golf Classic
- 5.31.17 Bay Area Real Estate Roundtable

GET INVOLVED & SUPPORT PACE!

CONTACT KELLIE WELCH TO VOLUNTEER OR SPONSOR EVENTS AT 408-625-6193





BOARD OF DIRECTORS

Tom McGovern, President

David Setti, Vice President

Thomas Marchok, Treasurer

Kurt Ohlfs, Secretary (non-voting)

Paul Lacy

Jeff Fallick

Lisa Grisalin

Harry Lopez, Esq.

Debbie McCarroll

Sarah Mudgett

Mark Peper

OUR SUPPORTERS

The **SOBRATO**
Family Foundation

FIDELITY CharitableSM

Higher Fire
clayspace & gallery

Grassi Investment Management, LLC

B
BERLINER COHEN LLP

G
GRISALIN
MANAGEMENT INC.

Google Serve
Volunteers with
Hands On
BAY AREA

wishbook2017 | The Mercury News

amazon smile
You shop. Amazon gives.

SEQUOIA
WEALTH ADVISORS
& Investment Management, Inc.

ONEDIGITAL
HEALTH AND BENEFITS

do the MATCH
Where good deeds do more
for your community.

ups

CSR
CARES
FOUNDATION

WHOLE
FOODS
MARKET

DERMER
LAW FIRM



Baughman
Financial Group

Symantec.

Nickels for Non Profits

HEFFERNAN
FOUNDATION

lisa & lisa
REAL ESTATE CONSULTANTS

Microsoft

CISCO

P3TI

O2
MORTGAGE

Hines

WALTON ST
CAPITAL

FORBES
GROUP
Property Management Services

eScrip

BONE SMART
PILATES
AGING STRONG DVD SERIES
www.BoneSmartPilates.com

The Sage
Colleges

Smitten
ICE CREAM

H

MANUFAB
INDUSTRIAL, RESIDENTIAL, COMMERCIAL, MECHANICAL AND REFRIGERATION

TRUE NORTH
MANAGEMENT GROUP

Gilfix & La Poll
Associates LLP

Hillrose Dairy

Rotary
Club of Los Gatos

THE SWIG
COMPANY



Ameriprise
Financial | Be Brilliant.

AQUATIC AV

Friendly Auto Care
The Friendliest Auto Shop In Town!



TISHMAN SPEYER



For a full list of all corporate supporters, grantors, matching gift corporations, please visit our website www.pacificautism.org. Our best effort was made to include all corporate donors \$500+. We apologize if inadvertently donors were omitted.

INDIVIDUAL DONORS- Thank You!

\$20,000+

Pat & Darla Flanagan

\$10,000-\$19,999

John Aiassa

Pat & Penny Barrett

Jim Clifford

Gregory Hartman

Tom Hayes

Steve Hermann

Rob Isackson

John & Marcia Goldman

Greig Lagomarsino

Rich & Kristi Saso

Scott Smithers

Matt & Ellen Moran

Chuck Seufferlein

Timothy Treadway

\$5,000-\$9,999

Nelly Binnendyk

Greg Cloth

Sheila Dermer

Michael Goldstein

Mark Heising & Liz Simons

Sam & Michele Hooker

Dan Letter

Morgan Lingle

Ryan McShane

Ray & Suzanne Mocherman

John Moe

Morrison & Foerster Foundation

Ken Perry

Bill & Lynn Poland

Riccardo & Stephanie Ramirez

\$1,000-\$4,999

Nick Alimam

Jeffrey Andrews

Brandon Bain

Jon Bergschneider

Adam Berry

Janice Berthold

Drew Bolger

Robert & Janet Brabson

Tony Calabrese

John Capiello

Chitresh Narashimhaiah &

Shantala Chandra

Will Connors

Terry Daly

Richard Danesi

Joseph & Cheryl Dermer

Ed Pratt & Dan Dermer

Rod Diehl

Bill Doyle

George Eckard

Ryan Egli

Todd Eschelmann

Jeff Fallick

Patrick Fisher

Jason Flynn

Eric Fox

Chris Freise

Zack Georgeson

Drew Gordon

Andre & Lisa Grisalin

Joe Guttadauro

Erik Hallgrimson

Ali Harandi

Andrew Harper

Joseph Galgano &

Gail Hashimoto

Brian Hecktman

Rob Hielscher

Charles Horejs

TK Inbody

Michael Jameson

Kyle Jeffers

Alan Jung

Phillip Jung

Robert Jung

Darren Kenney

Griff King

Mark & Heidi Klein

Darin Klein

Kevin Kranzusch

Matt Kroger

Grant Lammersen

Adam Lasoff

Matthew Love

Chase Lyman

Mark Maguire

Phil & Kelly Mahoney

Dennis Martin

Jerry & Jan Matranga

Dan & Nancy McCormick

Mark Mengelberg

Todd Miller

Joanies Morgado

Joe Moriarty

Neal & Sarah Mudgett

Kottayam & Sita Murugan

Edmund Najera

Todd & Suzanne Oliver

Keith Padien

Gary Palmer

Mark Penrod

Jagat Pokala

Scott Prosser

David Quigley
Anne Ralston
Stephen Richardson
Chris Roeder
Gerry Rohm
Kurt Scheidt
Craig Scheidt
Dave & Abby Setti
Luke Seufferlein
Carl Shannon
Matthew Shewey
Seth Siegel
Bruce Burkard
Dennis Lorette &
Patti Wilson
Cole Strombom
Denis Sullivan
Jean Suyenaga
Tom Taranto
Gary Teague
Nick Thomson
Chris Tokarski
David Tye
Adam Voelker
Blair Volckmann
Gregg Walker
Mr & Mrs Weidner

Justin Wesley
Graham Westphal
Dave Wilbur
John & Heather Winther
Vincent Woo
Andrew Yan
Shumin Yan
Brad Zampa
Steve Zaun

\$500-\$999

Nawder Alavi
Mark Anderson
Kashi Anoosheh
Laef Barnes
Bill Berridge
Brennan Bicknese
Andrew Blanchard
Sarah Bohannon
Bill Bond
Marc Bonfigli
Andrew Verhalen &
Janet Brownstone
Dustin Calkins
Brad Cardon
Whiff Collins
Jeff & Veronica Dabak
Alain & Stephanie de Raynal

Mike Dorris
Dave Dowdney
Eli Edwards
Robert & Debra Fils
Dave Fiore
Chris Gandy
Scott Greenwood
Gabriel & Maria Grosskopf
Jeff Hoppen
Russ Ingrum
Nate Jones
Theresa Jones
Yih & Mei Lin Jung
Mariam Karim
Randy & Judy Keller
Wayne & Karen Kennan
Jeffrey Kim
Rick LaFranchi
Jake Lehmkuhl
Charles Leitzell
Jason Lowenthal
Tom & Teresa Marchok
Ryan McDaniel
Richard & Dianne McDonnell
John Mckenna
Tyler Meyerdirk
Jesse Millman
Charles & Jenny Milo

Paul Monaco
Kevin Morgan
Ray Moroney
Pamela Nootbaar
Jason Oberman
Kurt & Carmen Ohlfs
Preston O'Connell
Allen Palmer
Alex Papoff
Ryan Payne
Don Peterson
Jon & Randy Risser
Brad Rocco
Jonathan Roheim
Patrick & Kathleen Schneider
David & Rise Schwartz
Varun & Vashuda Soundararajan
Drew Stepanek
Armand Tiano
Linda Urquhart
Adolf & Marion van der Heide
Paul Van Every
Lisa Vogel
Brandon Wang
Jim & Celeste Welch
Jimmy Yung
Andy Zighelboim

For a full list of all individual supporters, please visit our website www.pacificautism.org. Our best effort was made to include all donors \$500+. We apologize if inadvertently donors were omitted.

PACIFIC AUTISM CENTER FOR EDUCATION

1880 Pruneridge Ave., Santa Clara, CA 95050 • 408-245-3400
www.pacificautism.org

