

PACE

PACIFIC AUTISM EDUCATION

Support • Educate



Dear



Students

Your

2019-2020

ANNUAL REPORT

TERAPISTS



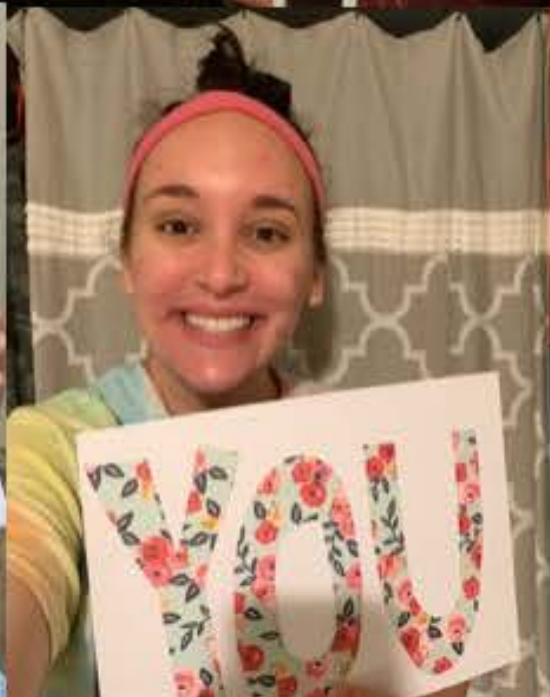
Staff

Miss

you

Connect • Support • Educate

www.pacificautism.org



# Table of Contents

Our Mission.....3	Featured Stories.....8-10
About Us.....4	Our Programs.....11-15
Our Leadership Team.....5	Events.....16
Board of Directors.....6	Corporate Donors.....17-18
Revenue and Expense.....7	Supporters.....21-22



# Our Message

Despite the many obstacles we faced during the 2019-2020 Fiscal Year, we have much to celebrate and be grateful for. In 2019, we celebrated PACE's 30th Anniversary and received a special Proclamation from Santa Clara Mayor Lisa Gillmor. To have reached this milestone is a testament to the commitment and dedication we have from our community of parents, staff, volunteers, and donors. When the COVID-19 pandemic happened in early 2020, our community came together and helped us continue our work through this unprecedented time.

We are grateful for our community, who came to the forefront to provide face masks, hand sanitizer, and other essential items for our programs. We are grateful for our generous donors who allowed us to keep our mission going through the crisis. We are grateful for our team of teachers, therapists, instructional aides, and residential caregivers who stepped up despite the challenges and uncertainty brought on by COVID-19. Our staff remained profoundly resilient, industrious, and vigilant when caring for our students, clients, and residents.

We are proud of what we accomplished together with your continued support, generosity, and kindness. Thank you for your ongoing support of PACE and the individuals and families we serve.

Sincerely,



Kurt Ohlfs, PACE Executive Director



## Our Mission

To enhance the lives of people impacted by autism, through innovation, exceptional education, and compassionate care.

## Our Vision

A world in which people of all abilities live fulfilled lives.



# About us

Founded in 1989, Pacific Autism Center for Education provides high-quality programs for children and adults with moderate-to-severe autism. PACE's vision is a world in which people of all abilities live fulfilled lives. Our comprehensive services include the PACE School serving students ages 6-22, Sunny Days Preschool, an inclusive early intervention program, PACE Residential Group Homes, Faces Behavioral Services, Porchlight Autism Education Series, our free online eLearning resource, and Porchlight University, our new eLearning training program for general education teachers.

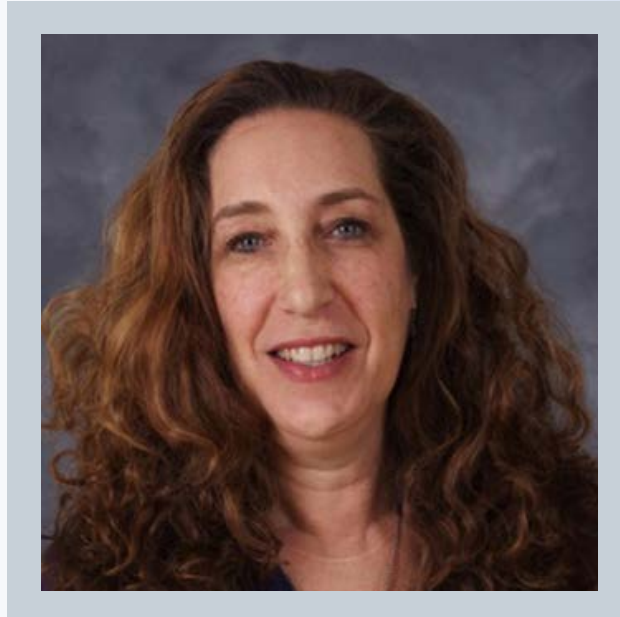


At PACE, we strive to connect, support, and educate individuals with autism. PACE teaches social and communication skills in order for our clients to experience the satisfaction and fulfillment that accompany learning, self-expression, self-care, productive work, and community experiences. The heart of the PACE model is for everyone to have the ability to *Communicate, Regulate, and Relate*.

# Our Leadership Team



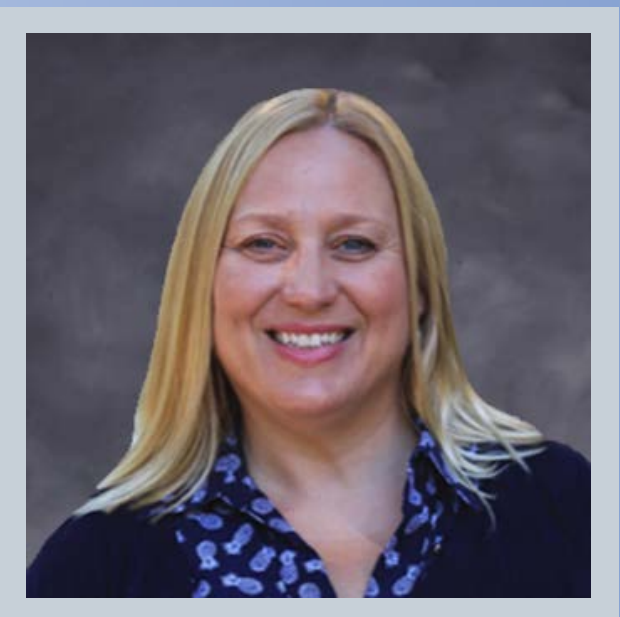
Kurt Ohlfs  
Executive Director



Karen Kennan  
Assistant Executive  
Director



Karyn Caradonna  
Director of Human  
Resources



Sadie Randle  
School Director

**208**

Teachers,  
Therapists,  
Support Aides

**13**

Administrative  
Staff

**50+**

Volunteers

# Board of Directors



Tom McGovern  
President



Dave Setti  
Vice President



Debbie McCarroll  
Treasurer

Kurt Ohlfs, Secretary (non-voting)

Lisa Grisalin

Paul Lacy

Sarah Mudgett

Jeff Fallick

Mark Peper

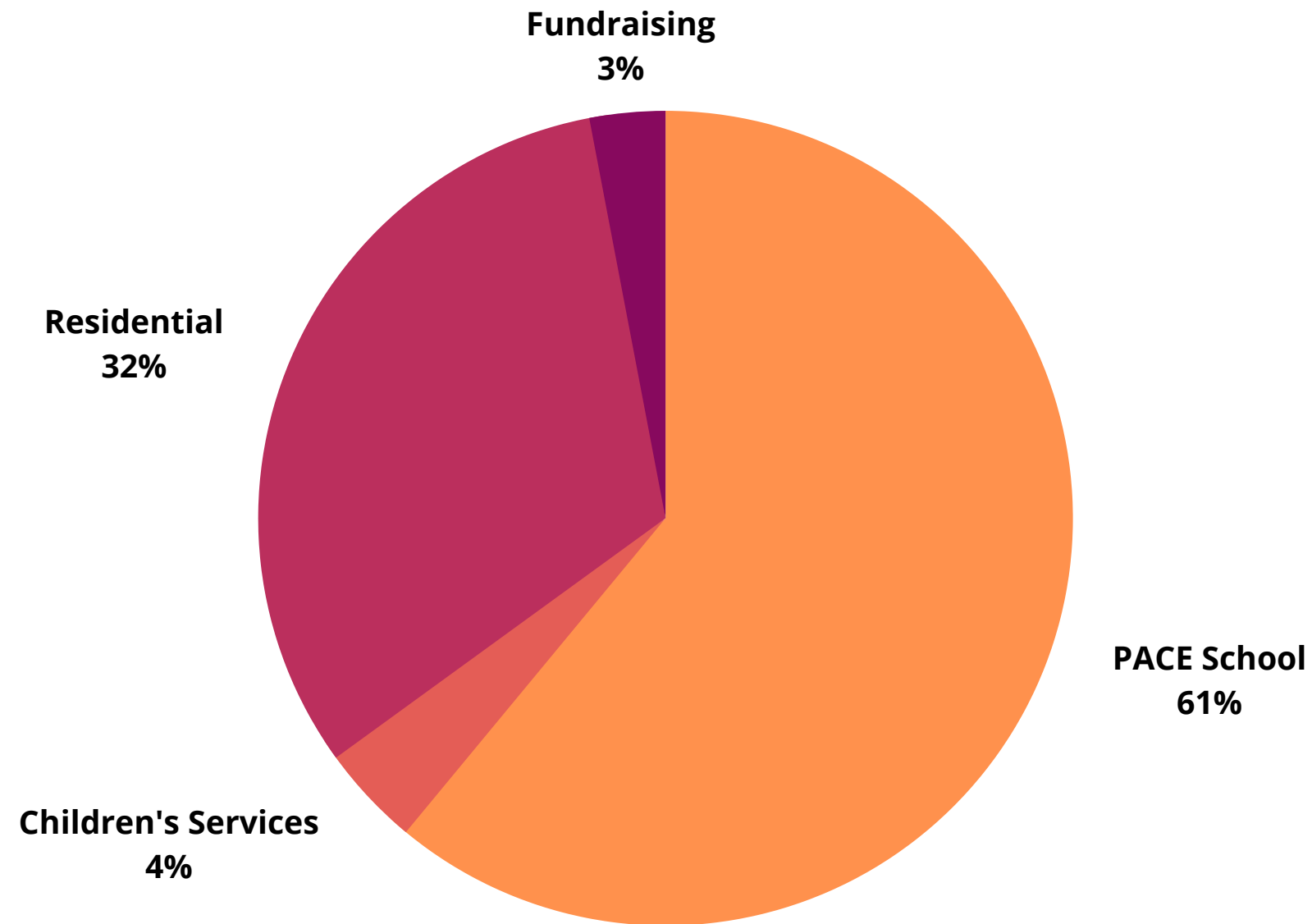
Mark Gilfix

**Make an impact.**  
Interested in Board opportunities? Learn how to get involved and support PACE at [www.pacificautism.org](http://www.pacificautism.org) or contact us at [development@pacificautism.org](mailto:development@pacificautism.org) or (408) 625-6174

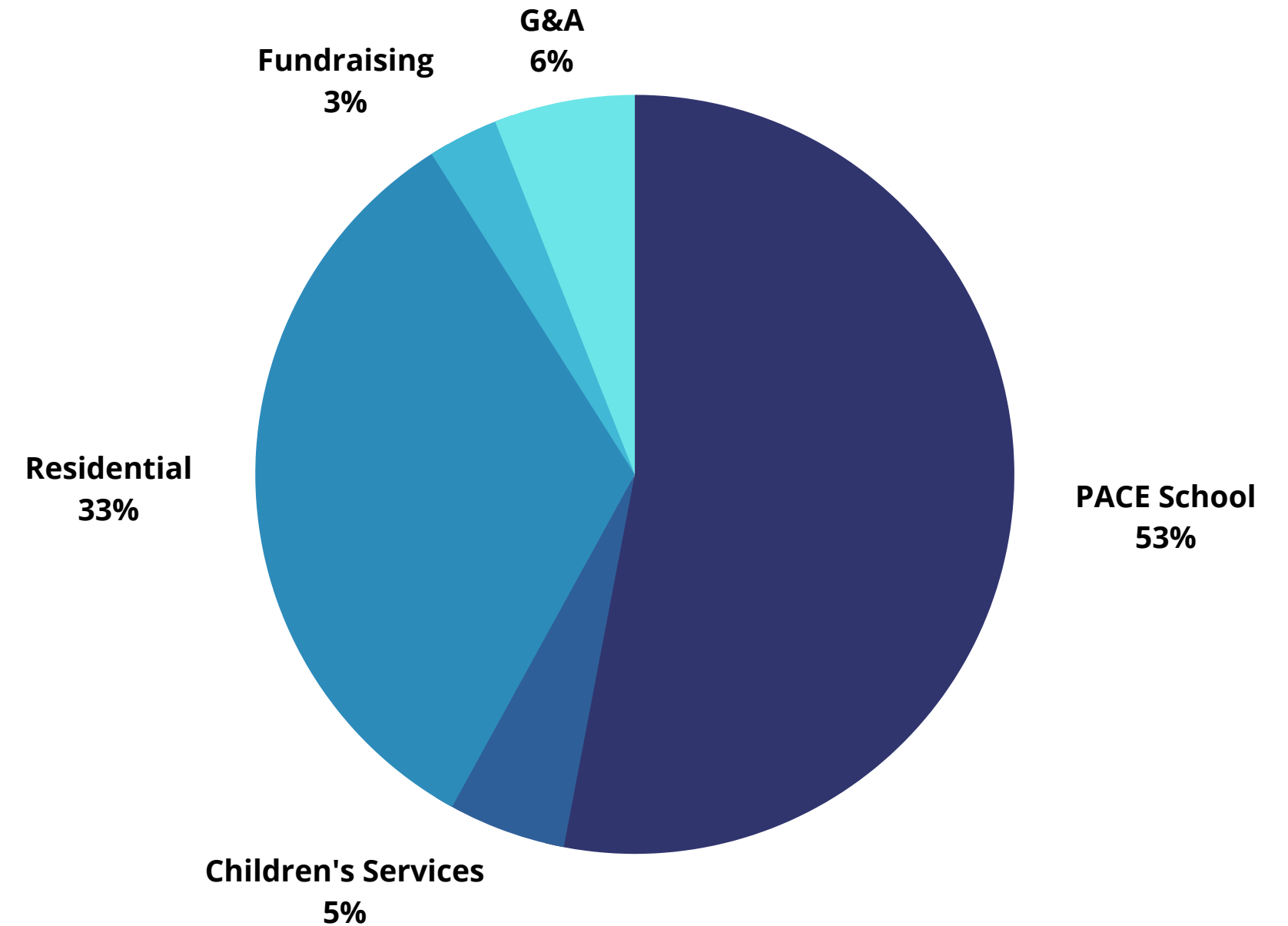


# 2019-2020 Revenue & Expense

## REVENUE \$10.9M



## EXPENSE \$9.9M



Please consider donating to PACE and supporting our programs!  
[www.pacificautism.org](http://www.pacificautism.org) OR  
contact our Development staff at (408) 625-6174



# Our Community. Our Heroes.

We will always remember 2020 as a year of unprecedented challenges, uncertainty, worry, and fear. We will also remember 2020 as a year when we saw our community come together and empower one another to remain optimistic and resilient. 2020 was a year of heroes. One of our heroes was a local high school student, Aseem.

Aseem learned about PACE from family friend and PACE Board President, Tom McGovern. Aseem felt compelled to do more and make a difference in his local community. His motivation to help led him to teach himself how to sew to make handmade masks. He made over 65 handmade masks which were donated to the PACE Residential Team. Additionally, his father's business began making hand sanitizer and donated a 5-gallon container to further support the PACE Residential program's safety needs for staff and residents. Aseem and his family personally delivered the masks and hand sanitizer to PACE. The generous donation helped supply PPE for the Residential Caregiver staff who provide 24/7 care to our residents.

Aseem's generosity didn't stop there. After learning about PACE's challenges with fundraising efforts due to canceled events, he proceeded to host a Facebook fundraiser, raising a total of \$1,670. Thank you to Aseem and his family for going above and beyond to support PACE staff and programs. While the COVID-19 crisis has disrupted our world, we have seen heroic acts of kindness. We are so grateful for community members like Aseem.



# Our Heroes continued.

Many individuals stepped up to support PACE, from financial contributions to making handmade face masks. Below are some of the extraordinary people and events that helped PACE carry on its mission during these unprecedented times:

- Community volunteer, Lindsay (pictured top left), and her family, hand-made 120 face masks for the PACE Residential Program. The donation helped protect our staff and residents' health and safety in all six group homes.
- This year, the annual Bay Area Real Estate Roundtable (BARER) was canceled due to COVID-19. The event is the agency's largest fundraiser, bringing in 50% of the PACE Annual Fund. When the event was canceled, the BARER community rallied together and donated **\$145,000** for PACE programs.
- On July 19, PACE School Director Sadie Randle spearheaded "Donation Day", a day for parents and community members to donate essential items. On this day, PACE received an outpouring of donations, including paper towels, hand sanitizer, wipes, classroom supplies, and more.

Our gratitude for the generosity and support we received is immeasurable. Thank you to our community for allowing us to continue to support our staff, students, residents, and clients.



# Carrying our mission forward.

In March of 2020, the world seemed to come to a stop. We were told to Shelter in Place, completely changing our daily lives. Our PACE School, Sunny Days Preschool, and Faces Behavioral Therapy services had to rapidly shift and adjust to distance learning. Our staff of teachers and therapists had to pivot to online learning quickly and effectively. These sudden changes were difficult, especially for the students, clients, and families we serve.

However, despite the challenges, our staff came together to ensure the individuals we serve were connected, engaged, and supported. They put together and delivered curriculum bins, filled to the brim with materials and sensory items tailored to each student, to ensure families had the necessary resources and tools to thrive during Shelter in Place. They created activities, resources, even games and exercise routines to share online to support the general community.

Because of the resiliency and hard work, our students continued to make progress on their IEP goals. Over the summer, we were able to welcome a limited number of students back to campus. Our staff carried our mission forward, and strengthened the connection with our families and those we serve. We are grateful and proud of all they do.



**"Special education is a huge task to undertake for distance learning and the staff at PACE have gone above and beyond. The key takeaway is that everyone has been VERY responsive, helpful, patient, flexible and understanding. Everyone's positive attitude and grace during a stressful time means a lot." PACE Parent**



**2019-2020**  
 The PACE School  
 served  
**55** students from  
**19** school  
 districts



**PACE School**<sup>™</sup>  
 Non-Public  
 Special Education

The **PACE School** is a non-public school, certified by the California Department of Education and accredited by the Western Association of Schools and Colleges. PACE School serves students ages 6-22 who live with moderate to severe autism, with a specific emphasis on non-verbal students and those with especially challenging behaviors and communication disorders.

When our community shut down, our teachers and therapists pivoted right away to implement effective in-home remote learning opportunities. They created engaging, online educational resources for parents and for the broader community. They focused on preparing each child for success during Shelter in Place. The staff packed and provided each student with their own individualized materials bin that included curriculum, activities, supplies, and sensory items. Over the summer, PACE School welcomed back 19 students in a half-day program while maintaining distance learning.





# Sunny Days PRESCHOOL

Serving San Jose since 2005, **Sunny Days Preschool** is a certified Non-Public School (NPS) and a California licensed Child Care Center (CCL). Sunny Days offers a half day morning preschool program for children ages 2.5 to 6 years old. Sunny Days supports children on the autism spectrum and those needing a little extra support in a responsive, developmentally appropriate program.

During Shelter in Place, the preschool team put together a creative program of online activities and lessons for our youngest students. Lead Teacher, Jessica Solchenberger, created daily lesson plans and suggested activities for families to use in their homes, and the preschool Instructional aides helped prepare resources and additional learning materials and videos. During this time, staff had the opportunity to enhance their own learning by participating in training opportunities offered online.

**Total Enrolled in 2019 - 2020: 14**



# Residential™

## Group Home Services

PACE owns and operates two children's homes and four adult group homes licensed to serve residents from 6 to 59 years of age. **PACE Residential** offers services and activities that give these individuals opportunities to live productive lives within the community. Programs include personal management, community participation, and recreation/leisure activities.

PACE's six residential group homes remained in full operation throughout the coronavirus pandemic. Each home continued to serve as 24/7 support for six (6) clients. Thank you to the residential care team for their tremendous work ensuring staff and clients are safe and comfortable during these uncertain times.

**2019 - 2020 Residents Served: 36**



**Thank you,  
Cupertino Rotary!**

**In May 2020, the  
Cupertino Rotary  
safely installed a new  
obstacle course at one  
of our children's  
homes.**





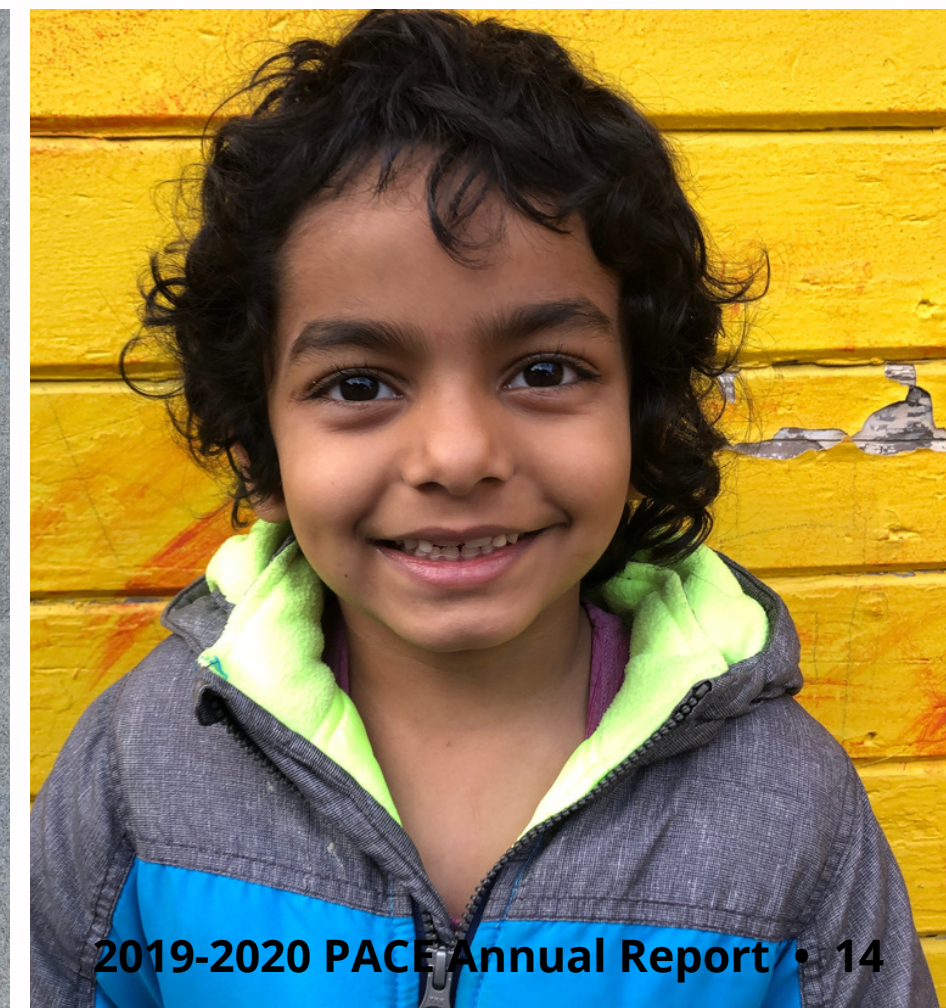
# Faces

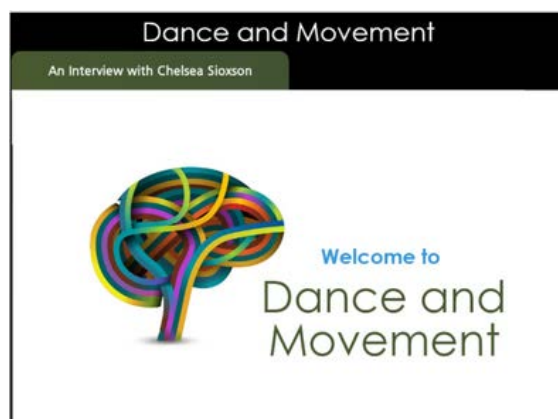
BEHAVIORAL SERVICES  
FOR CHILDREN

**Faces**, a behavioral therapy program founded in 1995, was established to help children with autism ages 18 months to 14 years reach their full potential utilizing Applied Behavior Analysis (ABA). Behavior therapy services include 1:1 intensive early intervention, elementary-aged intervention, and social development.

When the community was forced to shut down, the Faces team pivoted from home-based therapy sessions to teletherapy and online caregiver support, and later to clinic-based sessions at the Sunny Days Preschool campus. Faces therapists created engaging activities, lessons, and resources for parents and caregivers to enhance distance learning. They also focused on team building and found creative ways to build camaraderie, such as participating in a #SelfieSelfCare Challenge. The team would practice a self-care tip or strategy and share a selfie of themselves in action.

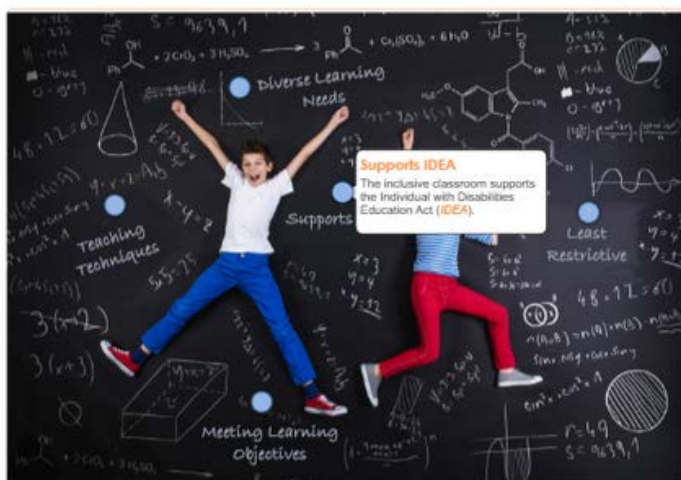
**Total Clients Served in 2019 - 2020: 33**





**Porchlight University**  
AUTISM EDUCATION SERIES

#### The Inclusive Classroom



**Porchlight University was a recipient of the 2020 NBCUniversal Project Innovation Grant**

The eLearning program consists of four 1-hour long modules; each module is broken down into 15-minute lessons. The courses include:

- Introduction to Autism
- Individualized Education Programs (IEPs) and the Law
- Creating Effective Classrooms
- Social Skills and Positive Behavior Culture



**Porchlight**  
AUTISM EDUCATION SERIES

The Porchlight Autism Education Series is a free eLearning program with over 50 modules designed to offer behavioral solutions to common daily challenges. Porchlight continues to be a strategic focus for Pacific Autism Center for Education to serve a global audience. Porchlight developments are funded with private contributions that support our global outreach.

In 2020, we launched the expansion of Porchlight Education: **Porchlight University**. This new eLearning program is a resource to teachers and para-educators who work primarily with typically developing students to facilitate better learning for students on the autism spectrum who are integrated into their classroom. Each course comes with a certificate of completion and a myriad of downloadable resources.

**Learn more at [www.porchlighteducation.org](http://www.porchlighteducation.org)**



# 2019-2020 Events

Inspiring volunteerism and fundraising for PACE

While many of our events were canceled due to COVID-19, we thank all of the volunteers and donors who continued to support us. Your contributions helped sustain our staff and kept our programs alive during a challenging and uncertain time. Learn about upcoming events at [www.pacificautism.org/events](http://www.pacificautism.org/events).

**9.25.19** 11th Annual PACE Golf Classic

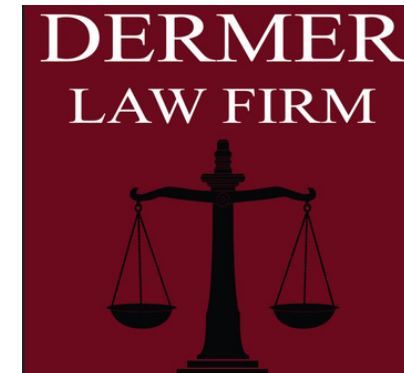
**12.11.19** PACE 30th Anniversary Celebration

**4.24.20** Kendra Scott Fundraiser (Virtual)

**Support PACE!** Contact our Development team to learn more about volunteer or sponsorship opportunities for future events at (408) 625-6174.



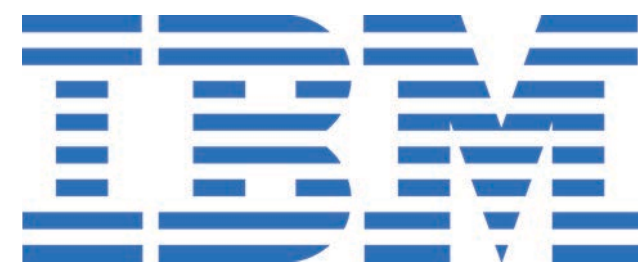
# Corporate Supporters



# Corporate Supporters



Elks Care - Elks Share



JANICE BERTHOLD  
HEFFERNAN INSURANCE BROKERS



For a full list of all corporate supporters, grantors, and matching gift corporations, please visit our website [www.pacificautism.org](http://www.pacificautism.org). Our best effort was made to include all corporate donors \$500+. We apologize if inadvertently donors were omitted.

# PACE Celebrates 30 Years of Service

On December 12, 2019, PACE staff, Board members, donors, friends, and family came together to celebrate PACE's 30th Anniversary. The event included speeches from Jerry Matranga, PACE Founding Parent, and special guest, Santa Clara Mayor Lisa Gillmor. Mayor Gillmor presented PACE with Mayoral Recognition in honor of the agency's milestone achievement.

In February 2020, PACE was invited by Mayor Gillmor to attend a City Council Meeting, where she presented PACE with a special Proclamation. The Proclamation recognized PACE for its 30 years of service and its dedication to serving the needs of individuals with autism.



# Our Supporters - *Thank you!*

## **\$10,000 - \$19,999**

Pat & Penny Barrett  
Janice Berthold  
BioMed Realty  
Preston Butcher  
John & Marcia Goldman  
Merlone Geier Partners

## **\$5,000 - \$9,999**

Jeffrey Andrews  
Jeff Arrillaga  
Steve Delamore  
David Denton  
Sheila Dermer  
Erik Doyle  
Mark Heising & Liz Simons  
Robert Isackson  
Ray & Suzanne Mocherman  
Morrison and Foester Foundation  
Stephanie Ramirez  
Kelly Schwarzhoff & Amanda Ferris  
Stu Shiff  
Scott Smithers  
Jean Suyenaga  
Case Swenson

## **\$1,000 - \$4,999**

Julie Adams  
Juan Bonuel  
JB Cahoon  
Dinesh Chandra & Kalpana Krishna  
Victor Coleman  
Nancy Combs  
Alain and Stephanie De Raynal  
Joe & Cheryl Dermer  
Trucie DeWit  
Troy & Evelyn Edwards  
Scott Eschelman  
Deborah Faryniarz  
Robert Fils  
Patrick Fisher  
Pat Flanagan  
Mark Gilfix  
Jon & Nancy Glaser  
Drew Gordon  
Lisa Grisalin  
John Hamilton  
Andrew Haydel  
Tom Hayes  
Steve Hermann  
John Herr

Samuel Hooker  
Charles Horejs  
Yih Jung  
Karen Kaplan  
Darren Kenney  
Darin Klein  
Kevin Kranzusch  
Paul Lacy  
Greig Lagomarsino  
Dan Letter  
Bruce Levin  
Matt Lituchy  
Amber Loanzon  
Harry Lopez  
Dennis Lorette & Patti Wilson  
Leo Magazu  
Mark & Heidi Maslen-Klein  
Jerry & Jan Matranga  
Tom McGovern  
Kevin McLarney  
John Moe  
Kottayam Murugan  
Todd Oliver  
James Olson  
Chau Ong

Orchard Partners LLC  
Mark Peper  
Stephen & Hope Pilch  
Bill Poland  
Jeffrey Quicksilver  
Scott Raley  
Bob Safai  
Michael Schonenberg  
Dave & Abigail Setti  
Rob Shannon  
Cameron Walters  
Jeff Weber  
Dave Wilbur  
John Winther

## **\$500 - \$999**

Brett Alter  
Chris Banke  
Bruce Cotter  
Terry Daly  
Arleen Ferguson  
David Gonzalez  
Peter Grassi  
Kris Kroening

# Our Supporters - *Thank you!*

Rick Lafranchi  
Gary McCurdy  
Dianne McDonnell  
Charles Milo  
Kurt & Carmen Ohlfs  
Patrick & Kathleen Schneider  
TJ Scimone  
Dhawal Sharma  
Lauren Snow  
Matt Tanzi  
Andrew Verhalen & Janet Brownstone  
Dolf & Marion van der Heide  
Lindsay Weston  
Catherine Young

## **\$100 - \$499**

Sudipta & Kaberi Bhattacharjee  
Jennifer Borges  
Jason Born  
Rachel Bouman  
Janet Brabson  
Elizabeth Brouwer  
Jack & Nancy Brown  
Steve Cance

Jianda Chen  
David Chiorello  
Alice Crowther  
Ed & Linda De Meo  
Tim Denenberg  
Parikshit Dutta  
Gregory & Raenette Earenst  
Martin Eng  
Roberta Firoved  
Mary Flanagan-Hanson  
Kathlyn Fujikawa  
Rosanna Gold  
Michael Golz  
Gary Golz  
Steven Gomez  
Richard & Barbara Grote  
Kaaren Hack  
Faye Hane  
Suchismita Hazra  
Patricia Hildebrand  
Xiaodan Huang  
Matthew & Kari Huston  
Patrick Imbach  
Mike Ingster

Richa Jain  
Robert Jenkins  
Connie Jerome  
Nate Jones  
Sooyeon Jung  
Krishna & Sireesha Kandhala  
Mariam Karim  
Wayne & Karen Kennan  
Margaret Kim  
Xiao Kitamura  
Norm Koenig  
Mel Lindstrom  
Gauri Manglik  
Laura McCarty  
Travis McCurdy  
Neal & Sarah Mudgett  
Dennis Niemeyer  
Pat & Kevin O'Brien  
Ting O'Connor  
Nate Olson  
Pijush Paul  
Mark Pirie  
Rebecca Reyes  
Jeff Schwartz

Bryce Scofield  
Rishi Shahani  
Sumanth Somashekar  
Elisabet Stow  
Terri Stringari  
Dennis Styczynski  
Lakshmi Subramanian  
Joseph Tauscher  
Mike Tremaine  
Karen Turchan  
Paul Van Every  
Glenda VanderKam  
Sudhakar Vemuri  
John Violet  
Tom Watkins  
Jezz Wong  
NengTze Wong

**Thank you** to all of our individual donors for Fiscal Year July 1, 2019 - June 30, 2020. For a full list of individual supporters, please visit our website [www.pacificautism.org](http://www.pacificautism.org). Our best effort was made to include all donors \$100+. Auction and ticket purchases are not included in this list. We apologize if inadvertently donors were omitted.



**Pacific Autism**  
CENTER FOR EDUCATION

1880 Pruneridge Avenue, Santa Clara, CA 95050

(408) 245-3400    [www.pacificautism.org](http://www.pacificautism.org)

